



ARKOTE SIGNAGE

BANNER PRINTING SERVICES

MAKING A BIG IMPRESSION



**BANNER MATERIAL SELECTION AND PRINT READY
ARTWORK GUIDE**



WWW.ARKOTE.COM.AU

Leave a lasting impression with a high-quality banner display from Arkote Signage!

We provide a comprehensive range of Banner Mesh, Airmesh, Open Weave Mesh, Shade Cloth and Flex Banners that provide effective advertising and unmatched site privacy for buildings, construction sites, landscape or events at Unbeatable Prices.

We offer various banner sizes, delivering truly outstanding results.

Arkote Signage has the skills, knowledge and equipment to get the job done. No matter how big or colourful your banner design, we can find the solution that's right for you.

1

SELECT THE MATERIAL THAT'S RIGHT FOR YOUR PROJECT



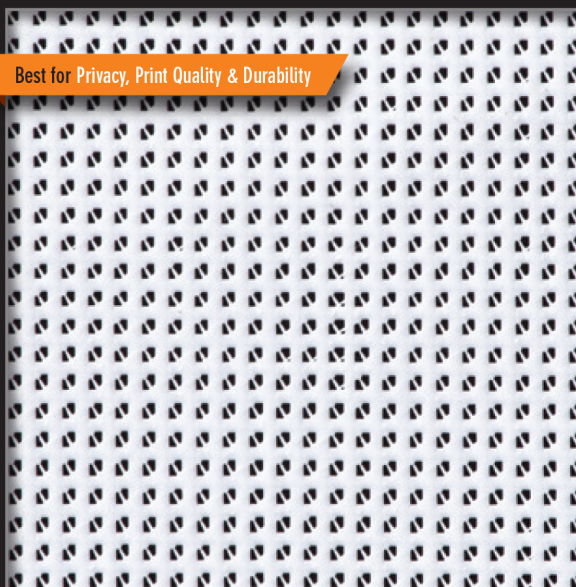
We have 5 types of material to choose from, each has slightly different print and durability characteristics. We recommend Airmesh or Open Weave Mesh if your site is wind exposed. Where you need superior privacy, print quality and durability we recommend Premium Mesh or PVC Banner. Call us and we'll recommend the most appropriate product to your requirements.

| MATERIAL OPTIONS | TRIM SIZE | IMAGE AREA | FABRIC %* | DURABILITY+ | PRINT QUALITY |
|------------------|-------------------|---------------------|-----------|-------------|---------------|
| PREMIUM MESH | 50 x 1.6 / 1.8mtr | 4960 x 140 / 1.8mtr | 80% | 4 yrs | Very High |
| AIRMESH | 50 x 1.6 / 1.8mtr | 48 x 1.6 / 1.8mtr | 65% | 2 yrs | High |
| OPEN WEAVE MESH | 50 x 1.6 / 1.8mtr | 48 x 1.6 / 1.8mtr | 50% | 2 yrs | Medium |
| SHADE CLOTH | 50 x 1.6 / 1.8mtr | 48 x 1.6 / 1.8mtr | 50% | 1 yrs | Low |
| PVC BANNER | 50 x 5mtr | 48 x 5mtr | 100% | 4 yrs | Very High |

* Mesh Fabric % indicates the percentage of open space in the fabric. The more aerated the fabric.

+ Durability indicates expected life span of the banner material and print under average weather conditions but does not cover damage caused by high winds, extreme weather events or inappropriate installation.

PREMIUM MESH



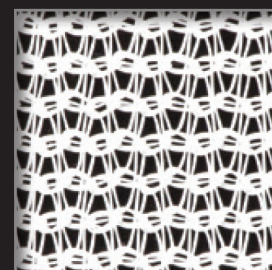
AIRMESH



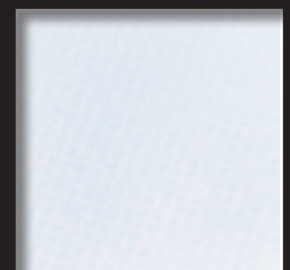
OPEN WEAVE



SHADE CLOTH



PVC BANNER



ARKOTE SIGNAGE

BANNER PRINTING SERVICES



(08) 8276 8811



www.arkote.com.au



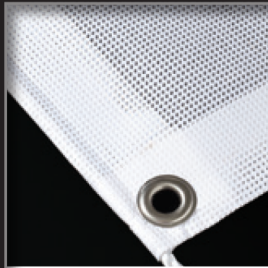
theteam@arkote.com.au

2

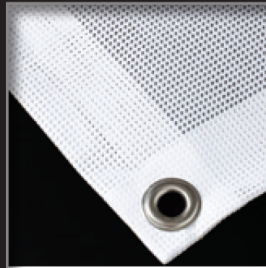
SELECT FINISHING OPTIONS FOR FIXING & FITTING

While some finishing techniques are only available with certain materials it's important to consider how your banner will be installed to determine the finishing options best for your project.

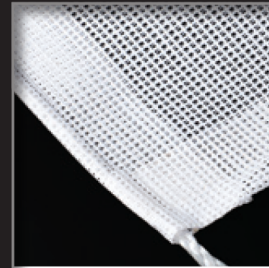
| FINISHING OPTIONS | PREMIUM MESH | AIRMESH | OPEN WEAVE MESH | SHADE CLOTH | PVC BANNER |
|----------------------|--------------|---------|-----------------|-------------|------------|
| ROPE, HEM & EYELETED | | | | | |
| HEMMED & EYELETED | | | | | |
| ROPE EDGE | | | | | |
| KEDER EDGE | | | | | |
| NO FINISHING | | | | | |



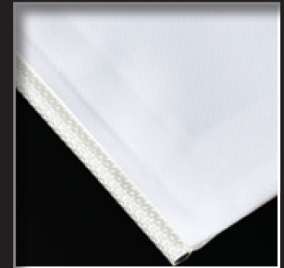
ROPE, HEM & EYELETED



HEMMED & EYELETED



ROPE EDGE



KEDER EDGE

3

SELECT PRODUCTION OPTION TO ENSURE ON TIME DELIVERY

We're committed to getting your job done and delivered when and where you need it. To help you manage your project we provide 3 levels of turnaround time to suit your needs.

| DELIVERY LEVELS | TURN AROUND [^] | LOADING |
|-----------------|--------------------------|---------|
| STANDARD | 8 Working Days | - |
| EXPRESS | 5 Working Days | +15%* |
| ULTRA EXPRESS | 3 Working Days | +25%* |

[^] Turnaround times are based on printing supplied 'ready to print' supplied artwork (refer to Supplying Print Ready Artwork for more details) within the number of working days from when our printing proof is approved. These times include delivery within Melbourne Metro only, a confirmation of delivery costs for non Melbourne Metro deliveries will be provided once an order is made.

* Additional prices are a percentage of the standard rate for production and print based on the total price, not including gst.

4

SUPPLYING ARTWORK TO SUPPLIED SPECIFICATIONS

Whether you supply us with logos and images to produce a design for you, or provide print ready artwork, please follow our guidelines to ensure we can get the best results for your project.

SUPPLYING MATERIAL FOR US TO CREATE ARTWORK

1. Supply logos as vector files in pdf or .eps formats.
2. Supplied images as 300dpi - 600dpi jpeg files at 10% of actual print size.
3. Provide all text via email or in a Word doc file.
4. Supply any corporate fonts required in your design.

Once we've complete a design, we'll return a proof for you to approve prior to print.

SUPPLYING PRINT READY ARTWORK

1. Create artwork in Adobe Illustrator or CorelDraw to 1/10 scale (1m = 10cm) to the trim size with no bleed or crop marks. Note: Keder hem should not be included as part of the artwork as it falls outside the printed area.
2. All colours to be set to cmyk (rgb or spot colours are not accepted).
3. Ensure all important graphics, logos and text are keep within the specified 'Image Area'.
4. All images to be embedded into artwork as cmyk tif files at a minimum of 300dpi / maximum of 600dpi. Where possible, crop the images to the desired size and avoid scaling them within the artwork program.
5. All text should be converted to outlines (artwork containing live fonts are not accepted).
6. All vector logos should be pasted into the artwork (image based logo files are not accepted).
7. Avoid using complex or multiple 'effects' on text or graphics. If effects are used, 'flatten layers' before saving pdf.
8. Any slots, holes or special cut marks should be included as a separate layer in your artwork file.
9. All artwork should be saved and supplied as an editable pdf at a minimum of 300dpi / maximum of 600dpi, ensuring all text is converted to outlines.

Please note: any provided files not set up to the required specification will be returned with amendments and comments.



ARKOTE SIGNAGE

BANNER PRINTING SERVICES



(08) 8276 8811



www.arkote.com.au



theteam@arkote.com.au

DESIGN STYLE SAMPLES TO SUIT YOUR SELECTED BANNER MATERIAL

Below are 3 Design Style Samples to help you select the material that's most suitable to your existing design, or to help you create a design most suitable to your preferred material. If you are outsourcing your design, please provide this information to your designer to ensure your artwork is produced to the correct specification.

Recommend Open Weave or Shade Cloth



metroluxe

Luxury Townhouses - metroluxe.com.au

A. MONO LOGO & TEXT PRINTED WITHIN IMAGE AREA (also known as block printing)

Design Tips: Because these materials have a very open weave, keep the design simple and avoid small text or fine lines.

Recommend Airmesh or Open Weave



metroluxe

Luxury Townhouses - metroluxe.com.au

B. COLOUR LOGO & TEXT PRINTED TO TRIM EDGE

Design Tips: Avoid complex or multiple 'effects' on text or graphics, ensure your colours are CMYK.

Recommend Premium Mesh or Airmesh



metroluxe

Luxury Townhouses - metroluxe.com.au

C. COLOUR IMAGES, LOGO & TEXT PRINTED TO TRIM EDGE

Enhanced Print Quality: When printing on Premium Mesh an enhanced print mode can be selected for better results (additional cost applies).

Design Tips: Ensure your images are suitable for reproduction at the final print size and set all your document colours to CMYK.

Where possible use subtle textures in your background colours to minimise banding. If eyelets are required do not include eyelet marks on your artwork, but be aware the eyelets will encroach around the edge of your design.



ARKOTE SIGNAGE

BANNER PRINTING SERVICES



(08) 8276 8811



www.arkote.com.au



theteam@arkote.com.au